

# 25th Anniversary

Because of your support, IWF has provided more than \$850,000 in grants to support over 200 projects from organizations reaching all 99 counties in Iowa. The mission the founders created still holds true today. Our volunteers work tirelessly to advocate and educate; to collaborate with partners and research solutions; and to raise the funds necessary for women and girls to be economically self-sufficient through programs that teach growth and strength. As we move into 2019—our 25th year—we invite you to celebrate this important milestone with us. We are stronger together!



## IWF Announces CCSF Grant Recipients for 2019

In 2017, IWF created the Child Care Solutions Fund to help increase the availability of affordable, quality child care in Iowa. Linking Communities and Families in Fort Dodge, Iowa was the first recipient of this special grant. Earlier this month, IWF announced our 2019 CCSF Grant Partners: Ready Set Grow Child Care Center in Buena Vista County, and Davis County Daycare and Preschool in Bloomfield.

Ready Set Grow will be opening a new facility in a former retirement center in Storm Lake in the spring of 2019. And Davis County Daycare and Preschool will be upgrading its programming and age-appropriate learning tools, bringing an opportunity to provide more child care slots to their current center.

The need for accessible, affordable, quality child care is great. As IWF continues to collaborate with communities across the state, the request for funds will continue to grow. Child care is a family issue, a business issue, and a community issue. Please join us today and consider a contribution to the CCSF fund. We can't do it without your help!

To donate to the CCSF, visit the IWF website: [www.iawf.org/your-support/donate](http://www.iawf.org/your-support/donate).

## Circles of Giving

In the spirit of Thanksgiving, we are incredibly grateful to the many individuals and businesses that have supported our efforts throughout 2018. These gifts work to support ongoing operations to raise funds, make grants, educate, and advocate about the barriers keeping Iowa's women and girls from being economically self-sufficient. Yearly donations and our Circles of Giving three-year pledges positively impact our efforts. If you have yet to make a contribution, or would like to make an additional gift or renew your pledge, we invite you to do so before December 31.

Donations and pledges may be submitted through the IWF website, or by check mailed to IWF. Circles of Giving Pledge forms are available online at <https://iawf.org/circles-of-giving/> or by calling the office and talking with our friendly staff. Thank you for your support!

*Contributions to IWF are tax deductible to the extent of the law. Tax laws changed January 1, 2018. Confer with your tax advisor when making charitable donations. If you are 70 1/2 or older, there is a special provision that could provide a tax benefit for your charitable contributions.*

Visit [www.iawf.org](http://www.iawf.org) to learn more.



IOWA WOMEN'S  
FOUNDATION

2201 East Grantview Drive  
Suite 200  
Coralville, Iowa 52241

NONPROFIT ORG  
US POSTAGE  
PAID  
TRU ART

## SAVE THE DATE

JANUARY	Begin to accept <b>OVATION</b> Tributes
FEBRUARY	Women Shoot High – UI Women In Business (WIB) Basketball Event, Feb. 17
MARCH	Core Grant Applications open for 2020 funding
APRIL	Core Grant Applications deadline for submission April 30
MAY	6th Edition of <b>OVATION: A Tribute to Iowa Women and Girls</b> is unveiled throughout the state
JUNE	Community Child Care Solutions Fund LOI's accepted for 2020 funding
JULY	Community Review Panelists meet
AUGUST	Community Child Care Solutions Fund deadline for submission Aug. 1
OCTOBER	23rd Annual Luncheon Oct. 3, Coralville Marriott and Convention Center
NOVEMBER	Grapes & Gratitude, Iowa City
DECEMBER	Dine & Unwind, Cedar Falls

### Interested in supporting the Iowa Women's Foundation?

Want to do more? Looking for volunteer opportunities? Contact Dawn Oliver Wiand at (319) 774-3814.

 dawn@iawf.org

 /IowaWomensFoundation

 @iowawomensfdn

[www.iawf.org](http://www.iawf.org) 319.774.3813

**Executive Director** Dawn Oliver Wiand

**2018 Board of Directors** Megan Early Alter | Amanda Arn | Diane Benoit Janie Braverman | Kay Braverman | Susan Clark | Kathy Courtney Laurie Dawley | Alison Ames Galstad | Nancy Hauserman Susan Judkins Josten | LaShonda Kennedy | Lori Lane | Chelle Lehman Sarah Leonard | Stan Miller | Jen Neumann | Jill Olsen | David Rust Leighton Smith | Elizabeth Swanson | Buffie Tucker | Carrie Wagner

**2018 Advisory Board** Phyllis Chang | Stephanie Clohesy | Elizabeth Daly Peggy Doerge | Susan Frye | Christine Grant | Dolores Gutierrez Ellen Heywood | Lois James | Jean Jew | Jo Jones | Mary Lea Kruse Maxine Lampe | Judy Leavitt | Jean Lloyd-Jones | Della McGrath Linda McGuire | Mary Anders Morris | Katherine Moyers | Joy Smith

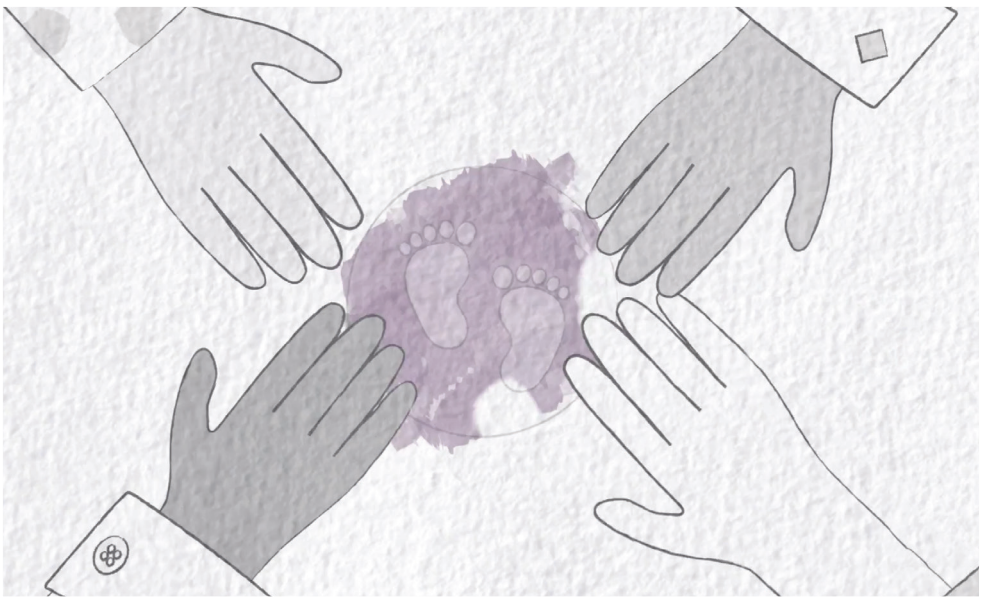
IOWA  
WOMEN'S  
FOUNDATION

FALL 2018 NEWSLETTER

## Stronger Together: 2018 Annual Luncheon

IWF's 22nd Annual Luncheon attendees filled the Coralville Marriot ballroom on October 4th to show their support for Iowa's women and girls. Board President Jill Olsen welcomed guests and announced the 2019 Grant Partners.

Guest Speaker Emily Bodholdt recounted the story of how she and a group of volunteers worked with their community to open a new child care center in a town with zero options. Later, IWF board member Jen Neumann shared how she has been personally affected by the child care crisis in Iowa, both as the child of a single mother, and as a working parent.



Keynote Speaker, Danielle Kurtzleben, spoke about the effects of women in the workforce and how the data shows that it's time to give priority to child care and paid family leave. Danielle's focus gave much food for thought: if the women currently running for political office this mid-term election won their seats, how might that change policies for working families?

At the end of yet another successful Luncheon, attendees left thinking not of the unsurmountable barriers that lie ahead for Iowa's women and girls—but of how we can all work together to shatter those barriers.

As we head into 2019, we truly are Stronger Together.

Visit [www.iawf.org](http://www.iawf.org) to learn more.



# FROM THE PRESIDENT

The fall season is a time for reflection, and the Iowa Women's Foundation has a lot to think about. We've had another successful year, each successive year building on the progress from the year before. For me, it is a pleasure to work with a courageous, committed, and energetic corpus of people dedicated to improving the lives of women and children in Iowa. We do that by dreaming and working.

### DREAMING BIG

Sometimes I anguish about how big the challenge is, and then I remember this organization is filled with big-hearted people who give of their time and their treasure because they, too, believe in our dreams. By working together, we can be positive and powerful so every Iowa family will have the opportunity to be economically self-sufficient.

### DREAMING WIDE

As a state-wide organization, we travel frequently to learn and connect with our communities. In April, we began our Solutions Tour with nine communities. As word traveled, another nine requested our help—a 100% increase! We will continue to visit and follow up with these 18 communities throughout the coming year.

### DREAMING DEEP

As a grantmaking organization, IWF helps fund the credible, successful organizations that work directly with Iowa's women and girls. This year we supported 14 projects benefiting hundreds of individuals. In 2019, we'll support 18—thank you for helping us to grow this number!

IWF's work is to make these dreams a reality by using every resource we can muster, beginning with your generous gifts of support, and growing those gifts. By supporting events like the Annual Luncheon, and publications like *Ovation: A Tribute to Iowa Women and Girls*, you help us to dream even bigger. Together with you, your friends, and mine, we can make this happen.



*Jill Olsen*  
**JILL OLSEN**  
Board President, IWF

# Ovation 2019

IWF honors Iowa women and girls from all walks of life with our signature publication, **Ovation: A Tribute to Iowa Women and Girls**. **Ovation** serves as an important part of our annual operating funds and enables us to accomplish our mission of improving the lives of Iowa's women and girls. Money raised through these tributes enables us to educate women and girls about philanthropy and play a leadership role in the challenges and opportunities facing our state.

Our 6th edition of **Ovation** will be published in Spring 2019 with unveilings scheduled in several Iowa cities. Please join us in honoring the amazing women and girls in your community and help us serve those who most need our support. For more information, or to submit a woman or girl to be honored, please contact Ann Parker at [ann@iawf.org](mailto:ann@iawf.org) or **319-774-3815**.

Visit [www.iawf.org](http://www.iawf.org) to learn more.

# 2019 Grant Partners

We're proud to announce our 2019 Iowa Women's Foundation Grant Partners. Read about each organization below or learn more about them online at [iawf.org/grant-partners](http://iawf.org/grant-partners).



### Amani Community Services Fast Track to Success for African American Women

A program designed for African American sexual assault survivors working toward successful employment by addressing poor self-image, systemic racism in employment settings, and economic independence.



### Area Substance Abuse Council (ASAC) Heart of Iowa Child Care Services Expansion

Expanding hours until 7:00 PM at an established child care center at Heart of Iowa (HOI), so mothers with substance abuse disorders can attend support groups, treatment groups, continue their education, and seek employment while knowing their children are in a safe and caring environment.



### Boys and Girls Club of the Midlands SMART Girls Program for Crater Lake and Council Bluff Clubs

A program that gives the space, support, and tools to navigate adolescence and to emerge as strong, healthy young adults while tackling issues such as friendships, body image and self-esteem, school stress, bullying, and more.



### Catherine McAuley Center (CMC) Offering Hope and Opportunity through Transitional Housing

In its second year, the housing program will continue to provide individualized programming and support services for women experiencing homelessness in order to help them successfully transition into safe, stable housing, achieve and maintain financial security, and build healthy social connections.



### Children and Family Urban Movement Whyd Girls

An out of school program for 5th-12th grade girls made up of after-school and summer programs, an intensive literacy program, a high school mentor program, and a Life Coach program—all in an effort to support their education during high school and post-secondary education.



### The Community Foundation of the Great River Bend: Love GIRLS Magazine Emerging Leaders Fellowship

A program that helps girls 13 and older launch a small business or community project through funding and a workshop where girls work with a budget, mentor, and in-kind resources from community partners, concluding with a reception for the girls to report their outcomes.



### Crisis Intervention Services: Survivors' Economic Self-Sufficiency Project

This program assists survivors of trauma who are living in the CIS emergency shelter with the skills and resources necessary to regain economic self-sufficiency including classes on Financial Empowerment, Life Skills, and Career Development.



### Dress for Success Des Moines Professional Women's Group

The Professional Women's Group continues to focus on employment retention and career advancement by providing valuable skill building information and support from other employed women through mentorship, so they can make the most of their new opportunities and grow a successful career.



### Dress for Success Quad Cities Lifelong Learning & Economic Independence for Low-Resource Women

A new Professional Women's Group Alumnae (PWGA) group is for women who have graduated from a job-retention program. It provides access to free, lifelong mentoring, which facilitates ongoing learning and professional development opportunities that empower women to be leaders in their lives and in their communities.



### Eyes Open Iowa (EOI) Building a Culture of Support for Pregnant and Parenting Young Women

Pregnant and Parenting Teens (PPT) struggle to graduate high school and continue on to attend college or find employment, perpetuating the poverty cycle. This program aims to end stigma by training school district personnel to stop unsupportive behaviors, substituting supportive actions, and developing trust and support between PPT and school officials.



### Friends of the Family Safety and Housing Stability

Through two programs, The Safe Shelter & Rapid Rehousing Service and the Human Trafficking Comprehensive Services, women fleeing domestic violence and labor and sex trafficking find safety through victim advocate support, shelter, and assistance with income stability.



### Girls Incorporated of Sioux City Eureka!

A summer program specializing in STEM curriculum is available for girls who often lack opportunities, resources, or support to pursue science, math, and technology because they are either first generation college students, girls of color, come from low income families, or are girls with disabilities.



### Heartland Family Services Workforce Managers

Iowa Family Works (IAFW) will implement employment case management for women in their substance abuse treatment center to aid in job training, support, and skill building to encourage job retention and career growth.



### Latinas Latinas al Exito, Inc. Al Exito Latina Leadership and Success

Al Exito (AE) afterschool program empowers young Latinas from rural communities to succeed in school and life through academic achievement, leadership development, civic engagement, and additional support from anxiety caused by recent anti-immigrant barriers on the state and federal level.



### Lutheran Services in Iowa (LSI) Refugee Child Care Business Development Program

LSI will continue to improve the availability and quality of culturally and linguistically appropriate child care for refugee parents who are seeking education or employment, and assist other communities in their efforts to build similar programs.



### St. Mark's Youth Enrichment Social Emotional Learning: Breaking Down Barriers to Success

St. Mark's offers before/after-school and summer programs for at risk students up to 5th grade with the goal of teaching mothers and girls' social emotional skills, surrounding them with trusting role models to mentor on honing those skills and equip them with tools to effectively implement what they learn.



### University of Northern Iowa Foundation The Community Producers Program (CPP): Economic Development for Refugee Agriculturalists

CPP provides economic empowerment opportunities for refugee women to become economically self-sufficient, agricultural entrepreneurs. Year three of this project will extend services to a new cohort of refugee women and implement additional workshops and other trainings to build skills such as business management, customer service, food safety, and managing community gardens.



### Women Food and Agriculture Network (WfAN) Harvesting our Potential: Training Women Farmers

This program empowers women to become farmers through on-farm experience and business planning through learning circles focused on mentorship with other successful female farmers.

